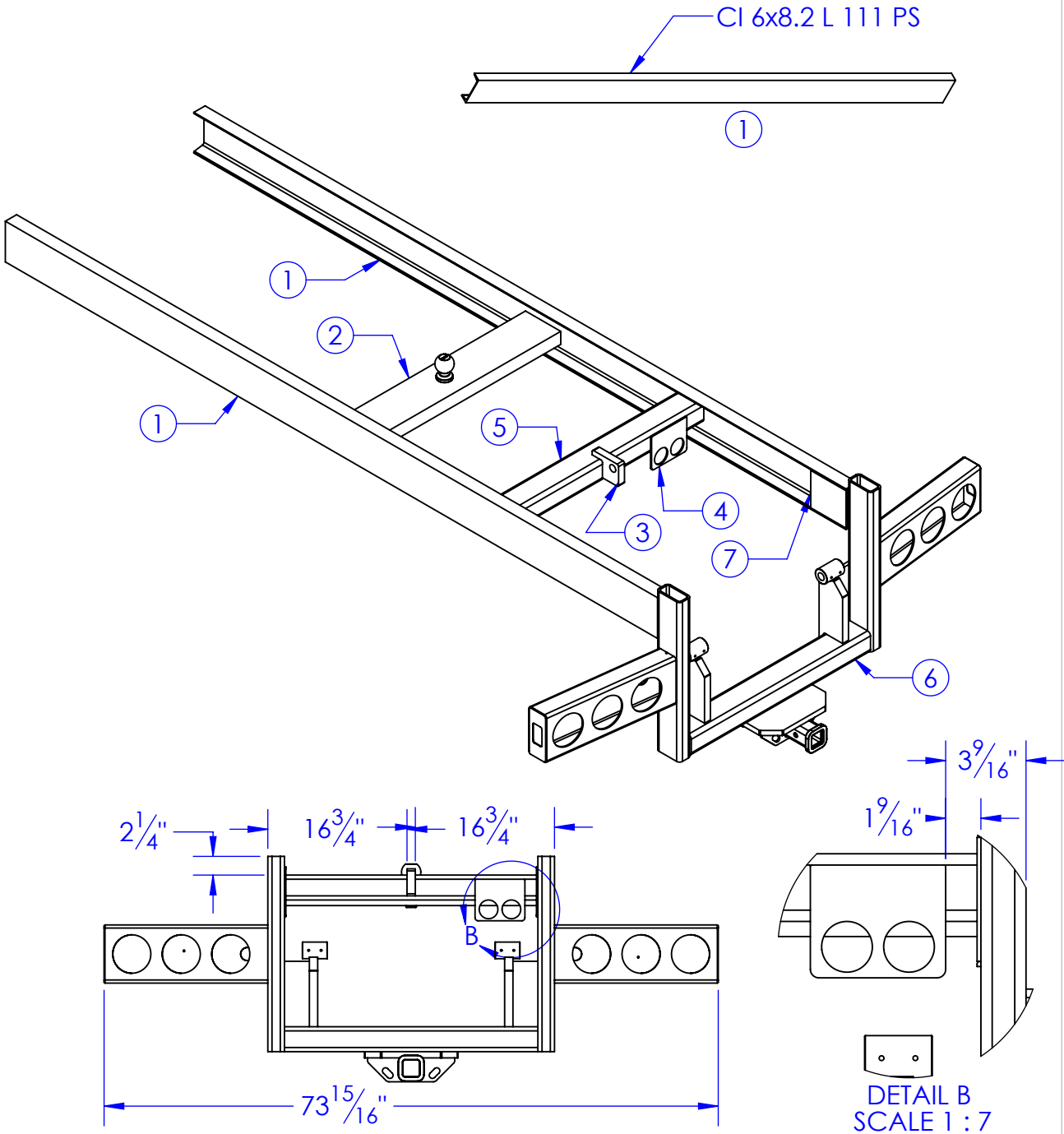
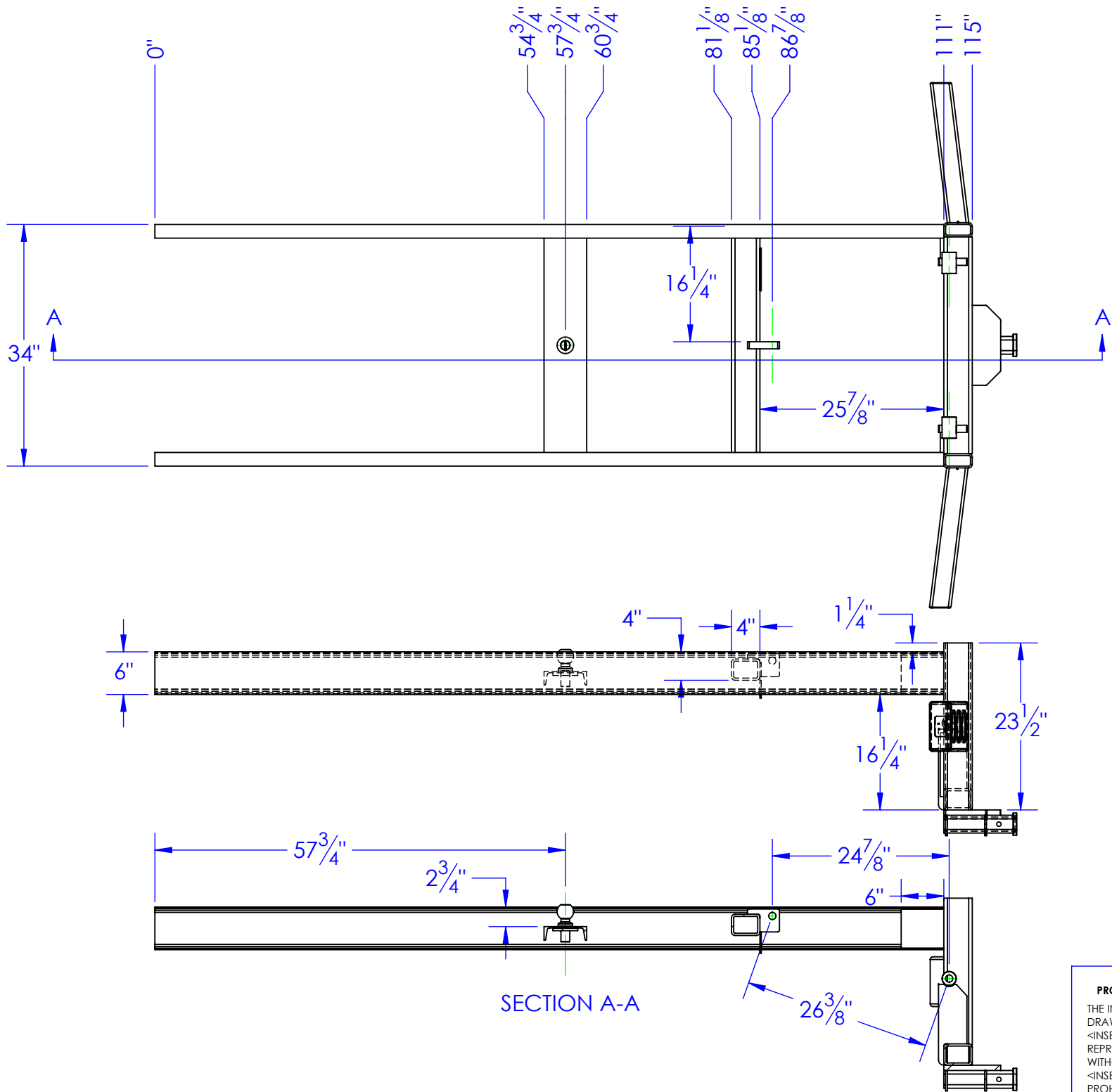


ITEM NO.	PART NUMBER	DESCRIPTION	MATERIAL	DRAWING #	QTY.
1	CI 6x8.2 L 111 PS	LENGTH: 111"	CI 6x8.2	STOCK	2
2	FB-5THWL	FIFTH WHEEL MOUNT, FLAT BED, WLDMT		80-1100	1
3	FP-SPK15-2100	BASE END, CYLINDER LUG, PS.	1" HRS.	15-2100	1
4	FP-SPK-15-2205	FRONT SPIKE HOLDER, PRO SPEAR	7ga HRS.	15-2205	1
5	RT 4 x 3 x .3125 L 33.5	LENGTH: 33-1/2"	RT 4 x 3 x 5/16	STOCK	1
6	SUB-PS-DROPHITCH B	REAR DROP HITCH WLDMT, PS.		00-1602	1
7	FI .25 X 6 L 5.5	LENGTH: 5-1/2"	FI 1/2x6	STOCK	2

REVISIONS			
REV.	DESCRIPTION	DATE	APPROVED
A	INITIAL RELEASE FROM 15-1103 & 5	4/23/2013	
B	REVISE ITEM 6 LOCATION	3/2/2017	
C	CHANGE CI FROM 5" TO 6"	4/7/2017	



PROPRIETARY AND CONFIDENTIAL
THE INFORMATION CONTAINED IN THIS DRAWING IS THE SOLE PROPERTY OF <INSERT COMPANY NAME HERE>. ANY REPRODUCTION IN PART OR AS A WHOLE WITHOUT THE WRITTEN PERMISSION OF <INSERT COMPANY NAME HERE> IS PROHIBITED.

UNLESS OTHERWISE SPECIFIED:
DIMENSIONS ARE IN INCHES
TOLERANCES:
FRACTIONAL $\pm 1/16$
ANGULAR: MACH ± 1 BEND \pm
TWO PLACE DECIMAL ± 0.10
THREE PLACE DECIMAL ± 0.005
MATERIAL
DO NOT SCALE DRAWING

	NAME	DATE
DRAWN	ETHAN	7/21/2017
PART #		
ASM #	SUB-FR-PS-3x5	
COMMENTS:		
MAIN FRAME PRO SPEAR 3X5, WLDMT		

P.O. BOX 248, SABETHA KS. 66534 (785) 284-3674 FAX (785) 284-3931		
TRIPLE C INC.		
SIZE	DWG. NO.	REV
B	15-1122 C	C
SCALE: 1:19 WEIGHT: 397.37 SHEET 1 OF 1		